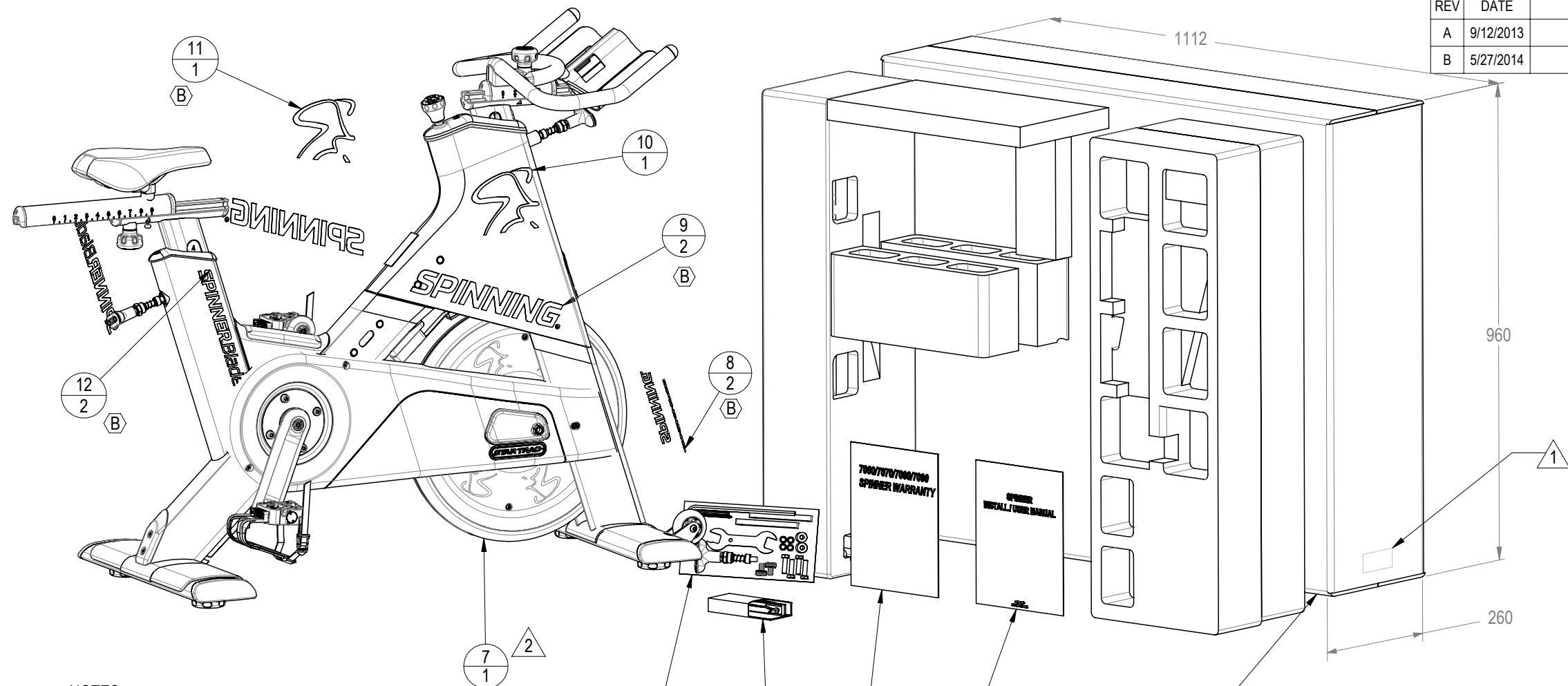


| REVISION HISTORY | | | | |
|------------------|-----------|----------------------|-------|----|
| REV | DATE | DESCRIPTION | ECO | BY |
| A | 9/12/2013 | PRODUCTION RELEASE | 14387 | OT |
| B | 5/27/2014 | UPDATE 2014 GRAPHICS | 14683 | OT |



- NOTES:
- 1 LABEL INFORMATION (4 LABELS):
 - a) MODEL: SPINNER BLADE BELT
 - b) SKU: 9-7240-MINTPO
 - c) SERIAL NUMBER: PER DOCUMENT 050-2125.
 - d) COUNTRY OF ORIGIN TO BE PRINTED ON A PEEL LABEL.
 - 2 SPINNER TO BE BAGGED ON A PLASTIC BAG TO PREVENT CONTACT WITH FOAM INSERTS.
 - 3 DOCUMENTS TO BE PLACED IN PLASTIC BAG 050-2080.
 - 4. SPINNER TO BE PRE-PACKED WITH DESICCANT TO PREVENT HUMIDITY.
 - 5. SHIPPING WEIGHT 145 lbs
 - 6. COLOR DESIGNATOR PER -XX AS SPECIFIED IN SOP 620-8222

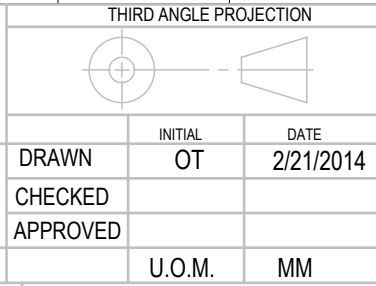
| ITEM NO. | PART NUMBER | -XX | DESCRIPTION | QTY. |
|----------|-------------|-----|-----------------------------------------------------|------|
| 1 | 620-7831 | | CARD,REGIST.,WARRANTY, SPINNER, 7060/7070/7080/7090 | 1 |
| 2 | 620-8263 | | MANUAL, INSTALL/OWNERS, BLADE BB | 1 |
| 3 | 740-7316 | | CARTON, SPINNER NXT | 1 |
| 4 | 740-8182 | | STYROFOAM, PACKING, E-SP | 1 |
| 5 | 740-8290 | | KIT, TOOL, INSTALL, BLADE | 1 |
| 6 | 740-8363 | | KIT, SPARE, DBL MOUNT, BRAKE PAD | 1 |
| 7 | 740-8567-XX | -53 | ASSY, BLADE BELT BIKE | 1 |
| B | 740-8641 | | SM SPINNING, GREY, 2014 | 2 |
| B | 740-8642 | | LG SPINNING, GREY, 2014 | 2 |
| | 740-8083 | | DECAL, SPINMAN, SILVER, RIGHT | 1 |
| | 740-8082 | | DECAL, SPINMAN, SILVER. LEFT | 1 |
| B | 740-8647 | | SPINNER BLADE DECAL, 2014 | 2 |

DOCUMENT STATUS:

NOTICE OF PROPRIETARY INFORMATION
 THIS DOCUMENT SHALL NOT BE REPRODUCED NOR SHALL THE INFORMATION CONTAINED HEREIN BE USED BY OR DISCLOSED TO OTHER EXCEPT AS EXPRESSLY AUTHORIZED BY CORE HEALTH & FITNESS, LLC.

| CLASS OF WORK | UNLESS OTHERWISE SPECIFIED DIMS ARE IN mm. TOLERANCES FOR MEASURE OF LENGTH ARE: | | | | | | | ANGLES = ±2° |
|---------------|----------------------------------------------------------------------------------|---------|----------|------------|-------------|--------------|---------------|--------------|
| | 0.5 to 3 | >3 to 6 | >6 to 30 | >30 to 120 | >120 to 400 | >400 to 1000 | >1000 to 2000 | |
| FINE | ±0.05 | ±0.05 | ±0.1 | ±0.15 | ±0.2 | ±0.3 | ±0.5 | ---- |
| MEDIUM X | ±0.1 | ±0.1 | ±0.2 | ±0.3 | ±0.5 | ±0.8 | ±1.2 | ±2 |
| COARSE | ±0.2 | ±0.3 | ±0.5 | ±0.8 | ±1.2 | ±2 | ±3 | ±4 |
| VERY COARSE | ---- | ±0.5 | ±1 | ±1.5 | ±2.5 | ±4 | ±6 | ±8 |

MATERIAL SEE BOM
 FINISH SEE BOM
 VENDOR:
 P/N:



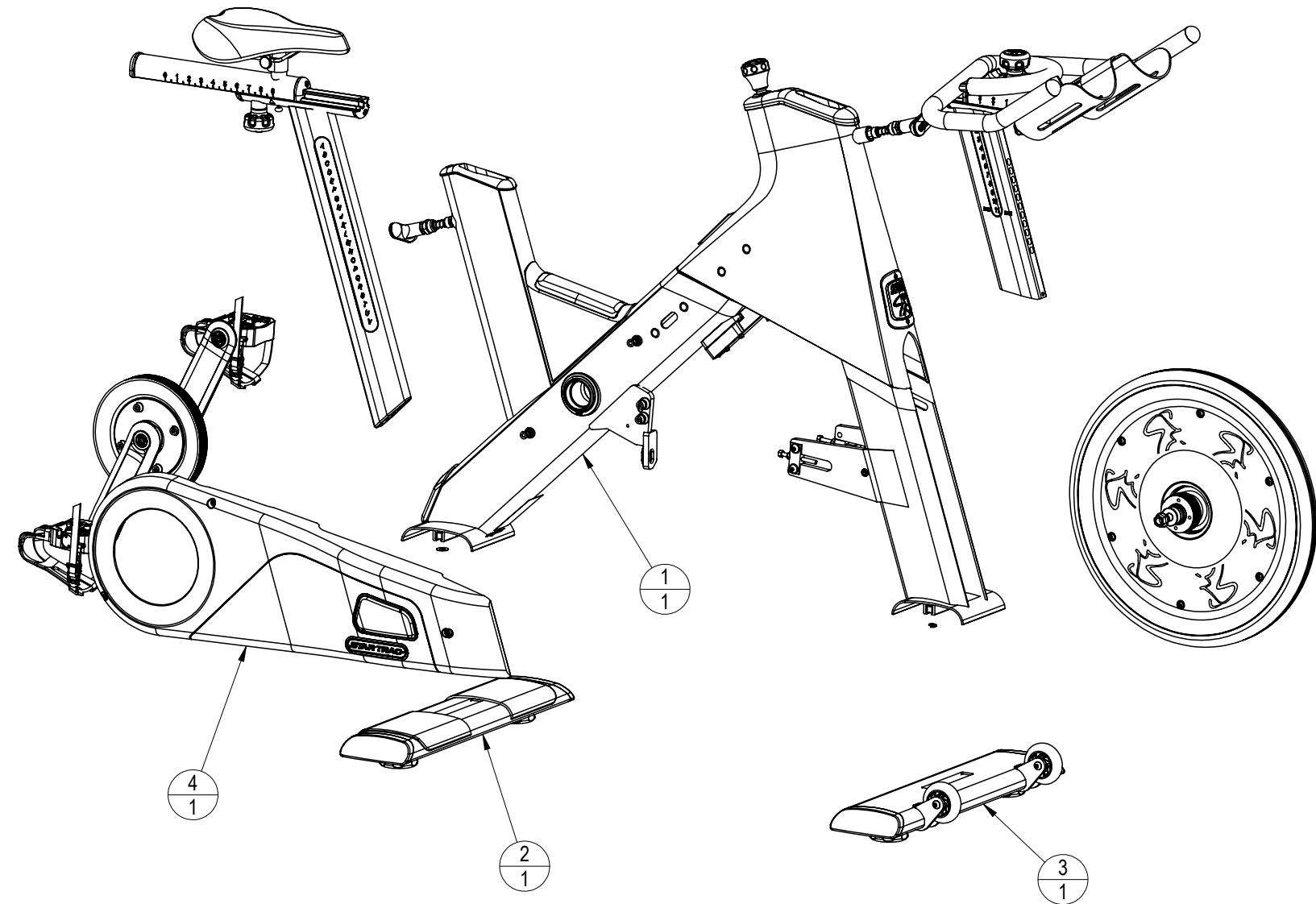
CORE HEALTH & FITNESS, LLC
 4400 NE 77th Ave., Suite 300
 Vancouver, WA 98662

CORE PART NO: **9-7240-MINTPO** REV: **B**

TITLE: **SPINNER BLADE BELT**

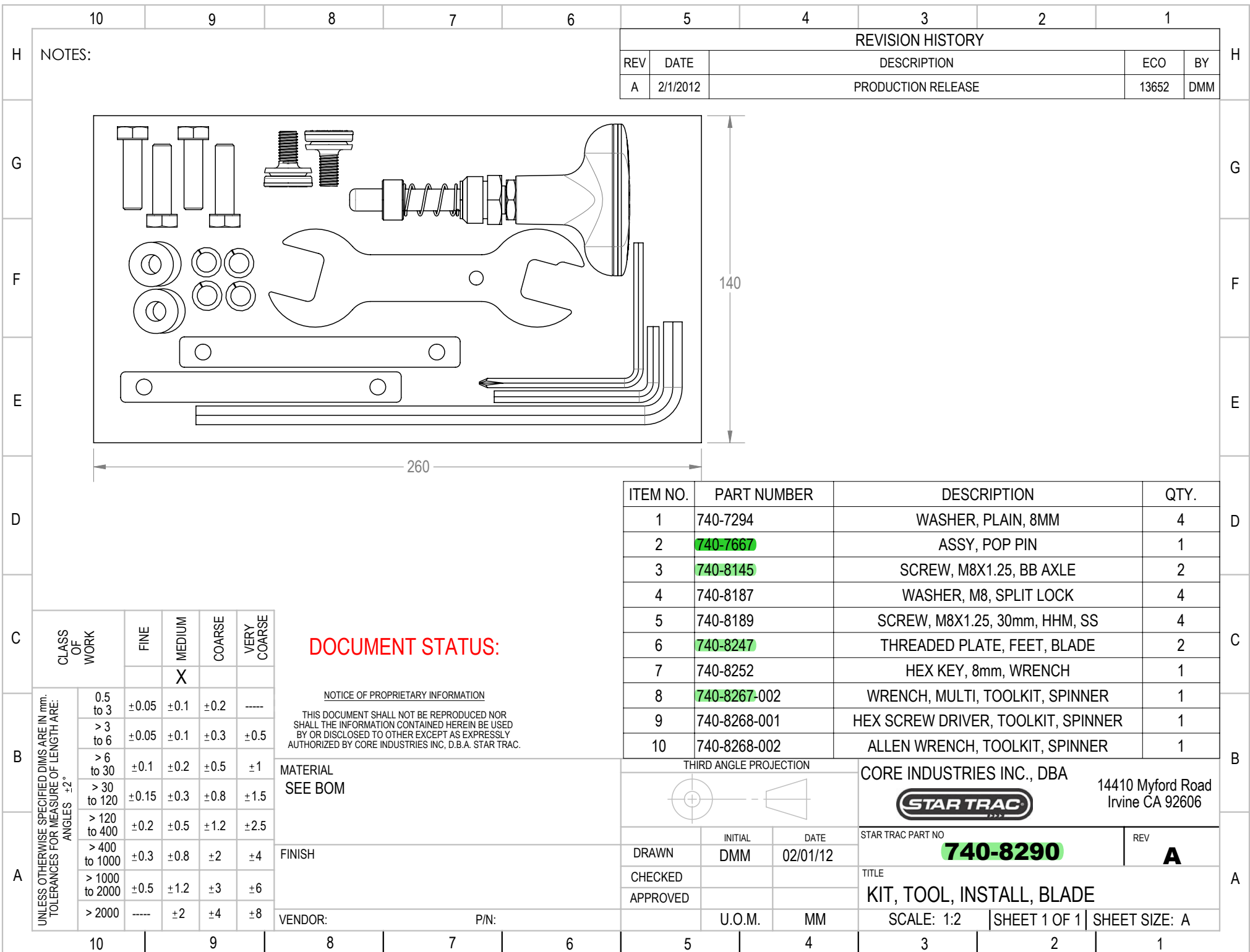
SCALE: 1:10 | SHEET 1 OF 2 | SHEET SIZE: B

DRAWING IS FOR COLOR
REFERENCE ONLY, REFER
TO SHEET 1 FOR COMPLETE
BOM FOR MISC PARTS



* -XX FOR COLOR DESIGNATOR

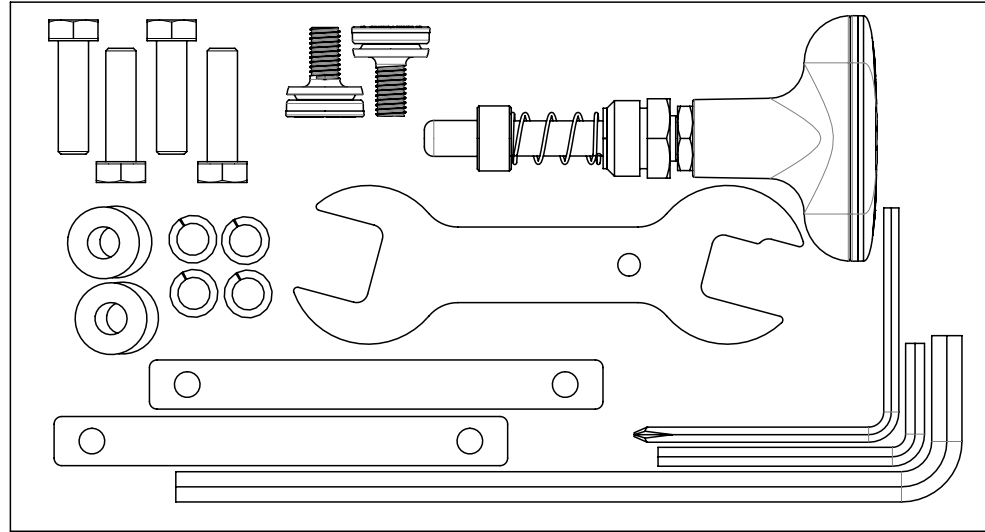
| ITEM NO. | PART NUMBER | -XX * | DESCRIPTION | QTY. | CORE HEALTH & FITNESS, LLC 4400 NE 77th Ave., Suite 300 Vancouver, WA 98662 | |
|----------|-------------|-------|----------------------------------|------|-----------------------------------------------------------------------------------|-----------------|
| 1 | 740-8565-XX | -53 | WELDMENT, FRAME, ION BIKE | 1 | CORE PART NO 9-7240-MINTPO | REV B |
| 2 | 740-7653-XX | -53 | WELDMENT, FEET STABILIZER | 1 | TITLE SPINNER BLADE BELT | |
| 3 | 740-7663-XX | -53 | WELDMENT, STABILIZER, FRT, BLADE | 1 | SCALE: 1:10 SHEET 2 OF 2 SHEET SIZE: B | |
| 4 | 740-8664-XX | -20 | CHAINGUARD, OUTER, ION BB | 1 | | |



NOTES:

REVISION HISTORY

| REV | DATE | DESCRIPTION | ECO | BY |
|-----|----------|--------------------|-------|-----|
| A | 2/1/2012 | PRODUCTION RELEASE | 13652 | DMM |



260

140

| ITEM NO. | PART NUMBER | DESCRIPTION | QTY. |
|----------|--------------|------------------------------------|------|
| 1 | 740-7294 | WASHER, PLAIN, 8MM | 4 |
| 2 | 740-7667 | ASSY, POP PIN | 1 |
| 3 | 740-8145 | SCREW, M8X1.25, BB AXLE | 2 |
| 4 | 740-8187 | WASHER, M8, SPLIT LOCK | 4 |
| 5 | 740-8189 | SCREW, M8X1.25, 30mm, HHM, SS | 4 |
| 6 | 740-8247 | THREADED PLATE, FEET, BLADE | 2 |
| 7 | 740-8252 | HEX KEY, 8mm, WRENCH | 1 |
| 8 | 740-8267-002 | WRENCH, MULTI, TOOLKIT, SPINNER | 1 |
| 9 | 740-8268-001 | HEX SCREW DRIVER, TOOLKIT, SPINNER | 1 |
| 10 | 740-8268-002 | ALLEN WRENCH, TOOLKIT, SPINNER | 1 |

DOCUMENT STATUS:

NOTICE OF PROPRIETARY INFORMATION

THIS DOCUMENT SHALL NOT BE REPRODUCED NOR SHALL THE INFORMATION CONTAINED HEREIN BE USED BY OR DISCLOSED TO OTHER EXCEPT AS EXPRESSLY AUTHORIZED BY CORE INDUSTRIES INC, D.B.A. STAR TRAC.

MATERIAL
SEE BOM

FINISH

VENDOR:

P/N:

THIRD ANGLE PROJECTION



CORE INDUSTRIES INC., DBA

14410 Myford Road
Irvine CA 92606



STAR TRAC PART NO

740-8290

REV

A

TITLE

KIT, TOOL, INSTALL, BLADE

SCALE: 1:2

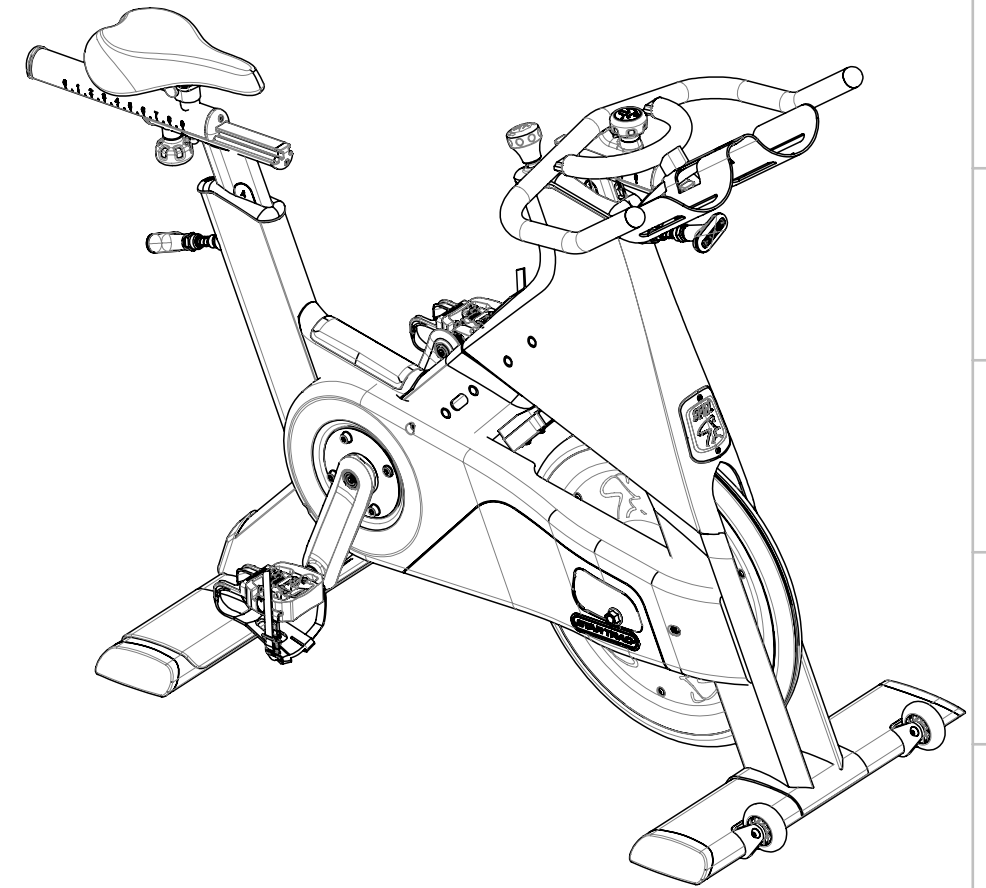
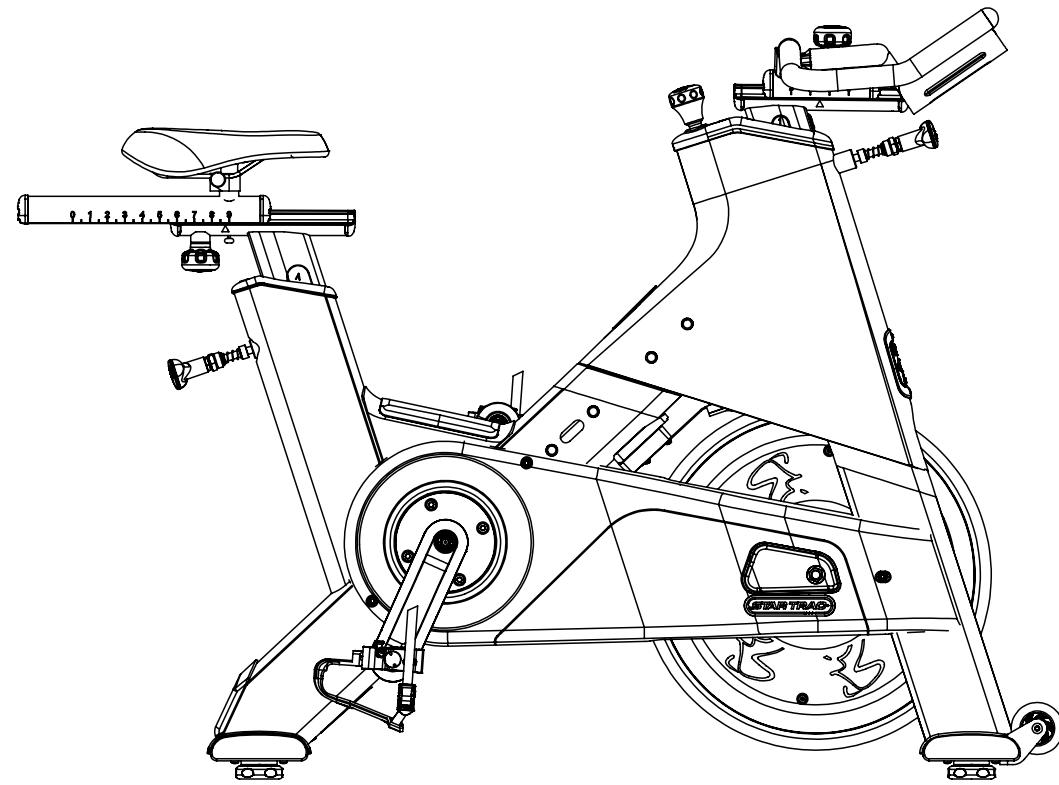
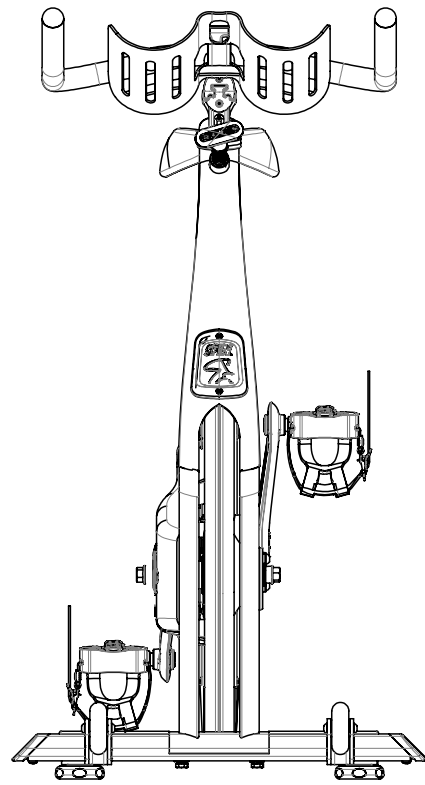
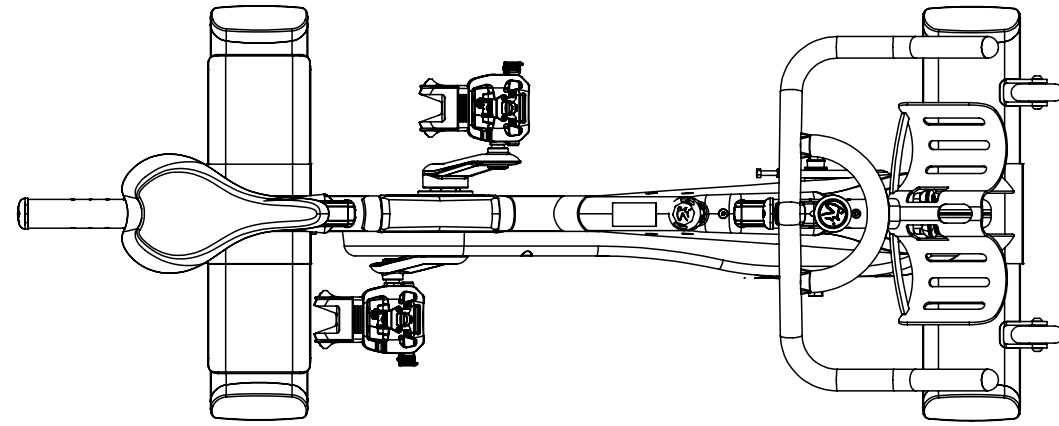
SHEET 1 OF 1

SHEET SIZE: A

| CLASS OF WORK | FINE | MEDIUM | COARSE | VERY COARSE |
|---------------|------|--------|--------|-------------|
| | | | X | |

| UNLESS OTHERWISE SPECIFIED DIMS ARE IN mm. TOLERANCES FOR MEASURE OF LENGTH ARE: ANGLES ±2° | 0.5 to 3 | ±0.05 | ±0.1 | ±0.2 | --- |
|---------------------------------------------------------------------------------------------------|----------|-------|------|------|------|
| | > 3 to 6 | ±0.05 | ±0.1 | ±0.3 | ±0.5 |
| > 6 to 30 | ±0.1 | ±0.2 | ±0.5 | ±1 | |
| > 30 to 120 | ±0.15 | ±0.3 | ±0.8 | ±1.5 | |
| > 120 to 400 | ±0.2 | ±0.5 | ±1.2 | ±2.5 | |
| > 400 to 1000 | ±0.3 | ±0.8 | ±2 | ±4 | |
| > 1000 to 2000 | ±0.5 | ±1.2 | ±3 | ±6 | |
| > 2000 | --- | ±2 | ±4 | ±8 | |

| REVISION HISTORY | | | | |
|------------------|-----------|--------------------|-------|----|
| REV | DATE | DESCRIPTION | ECO | BY |
| A | 9/13/2013 | PRODUCTION RELEASE | 14387 | OT |



DOCUMENT STATUS:

NOTICE OF PROPRIETARY INFORMATION
THIS DOCUMENT SHALL NOT BE REPRODUCED NOR SHALL THE INFORMATION CONTAINED HEREIN BE USED BY OR DISCLOSED TO OTHER EXCEPT AS EXPRESSLY AUTHORIZED BY CORE HEALTH & FITNESS, LLC.

| CLASS OF WORK | UNLESS OTHERWISE SPECIFIED DIMS ARE IN mm. TOLERANCES FOR MEASURE OF LENGTH ARE: | | | | | | | ANGLES = ±2° |
|---------------|----------------------------------------------------------------------------------|----------|-----------|-------------|--------------|---------------|----------------|--------------|
| | 0.5 to 3 | > 3 to 6 | > 6 to 30 | > 30 to 120 | > 120 to 400 | > 400 to 1000 | > 1000 to 2000 | |
| FINE | ±0.05 | ±0.05 | ±0.1 | ±0.15 | ±0.2 | ±0.3 | ±0.5 | ---- |
| MEDIUM | ±0.1 | ±0.1 | ±0.2 | ±0.3 | ±0.5 | ±0.8 | ±1.2 | ±2 |
| COARSE | ±0.2 | ±0.3 | ±0.5 | ±0.8 | ±1.2 | ±2 | ±3 | ±4 |
| VERY COARSE | ---- | ±0.5 | ±1 | ±1.5 | ±2.5 | ±4 | ±6 | ±8 |

MATERIAL
SEE BOM

FINISH
SEE BOM

VENDOR:

P/N:

THIRD ANGLE PROJECTION



| | | |
|----------|---------------|-------------------|
| DRAWN | INITIAL OT | DATE 2/24/2014 |
| CHECKED | | |
| APPROVED | | |

CORE HEALTH & FITNESS, LLC
4400 NE 77th Ave., Suite 300
Vancouver, WA 98662

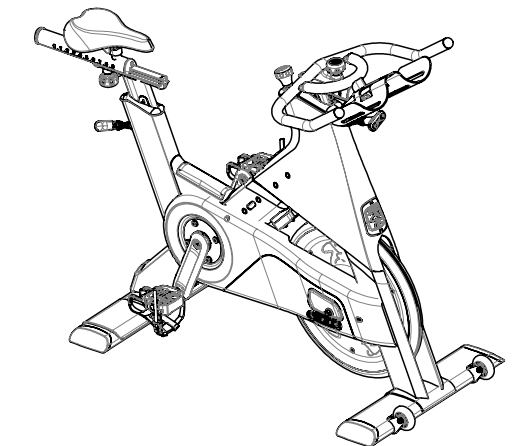
CORE PART NO: **740-8567-XX** REV: **A**

TITLE: **ASSY, BLADE BELT BIKE**

SCALE: 1:10 | SHEET 1 OF 7 | SHEET SIZE: B

| ITEM NO. | PartNo | DESCRIPTION | QTY. |
|----------|----------|-----------------------------------------|------|
| 1 | 740-8664 | CHAINGUARD, OUTER, ION BB | 1 |
| 2 | 050-1955 | LABEL, WARNING, COMM, SPINNERS | 1 |
| 3 | 050-2115 | LABEL, COUNTRY OF ORIGIN | 1 |
| 4 | 050-2125 | LABEL, SERIAL NO, OEM UNIV | 1 |
| 5 | 110-3506 | SCREW, M8x1.25, 30mm, BHCS, HK, SS | 2 |
| 6 | 718-5513 | BUSHING, FLANGE, Ø6mm ID X Ø8mm X Ø19mm | 1 |
| 7 | 731-0373 | WASHER, PLAIN, M6 | 3 |
| 8 | 731-0379 | SCREW, M8 X1.25, 20mm, SHC, HK | 2 |
| 9 | 731-0585 | WASHER, M4 | 3 |
| 10 | 731-0801 | NUT, RIVET, M6 | 5 |
| 11 | 740-4588 | SCREW, M8 X 1.25, 16MM, BHC, HK, SS | 2 |
| 12 | 740-7167 | WASHER, LOCK, SPLIT, M6 | 2 |
| 13 | 740-7174 | NUT, M6, HE, SS | 2 |
| 14 | 740-7193 | LABEL, LOGO, STAR TRAC, SPINNER | 1 |
| 15 | 740-7296 | BOLT, M6X1.0, 65MM, HEX CAP, SS | 2 |
| 16 | 740-7812 | SCREW, M4x0.7, 16mm, PHMS, PH, SS | 3 |
| 17 | 740-7825 | WASHER, 8.4MM ID x 16MM OD x 1.6 THK | 6 |
| 18 | 740-7601 | CHAINGUARD, MAIN | 1 |
| 19 | 740-8011 | BLOCK, FLYWHEEL ADJ, SPINNER | 2 |
| 20 | 740-8171 | SCREW, M6x1.0, 16mm, SHCS, HE, SS | 1 |
| 21 | 740-8191 | SCREW, M6x1.0, 30mm, SHCS, HE, SS | 2 |
| 22 | 740-8339 | GROMMET, CABLE, WATTS H-BAR | 1 |
| 23 | 740-8374 | ASSY, SEAT POST, BLADE, ION | 1 |
| 24 | 740-8524 | BELT, POLY K, 6 RIB, NXT BELT | 1 |
| 25 | 740-8535 | ASSY, FLYWHEEL, SPINNER BELT | 1 |
| 26 | 740-8595 | ASSY, H-BAR&POST, 11 ADJ, SPIN | 1 |
| 27 | 740-8663 | CHAINGUARD, INNER, ION BB | 1 |
| 28 | 740-7663 | WELDMENT, STABILIZER, FRT, BLADE | 1 |
| 29 | 001-0688 | ASSEMBLY, TRANSPORT WHEEL | 2 |
| 30 | 740-7187 | SCREW, M6X1.25X10, BHC, HE, SS | 2 |
| 31 | 740-8007 | BOLT, WHEEL, NXT | 2 |
| 32 | 740-7654 | STABILIZER, TUBE, EXTRUDE | 2 |
| 33 | 740-8250 | SCREW, M4.8, 13mm, PHT, PH, SS | 8 |
| 34 | 740-7656 | FEET, LEVELING, SPINNER | 4 |
| 35 | 740-7670 | END CAP, FEET, BLADE | 4 |
| 36 | 740-7653 | WELDMENT, FEET STABILIZER | 1 |
| 37 | 740-8545 | CRANK, BELT SPINNER, DR | 1 |
| 38 | 740-7560 | CRANK ARM, LEFT | 1 |
| 39 | 740-7555 | NUT, AXLE, B/B, M24x1.5 | 1 |
| 40 | 740-8002 | SPACER, BEARING, BB SPINNER | 1 |
| 41 | 740-7553 | BEARING, 6005 SERIES, 25x47x12, 2RS | 2 |
| 42 | 740-7554 | B/B AXLE | 1 |
| 43 | 740-7916 | M5 X 16MM, DOWEL PIN | 2 |

| ITEM NO. | PartNo | DESCRIPTION | QTY. |
|----------|-------------|-----------------------------------------------|------|
| 44 | 740-8145 | BOLT, CRANKARM, M8 | 4 |
| 45 | 740-7614 | ASSY, PEDAL, R | 1 |
| 46 | 740-7613 | ASSY, PEDAL, L | 1 |
| 47 | 740-8544 | PULLEY, 6 RIB, NXT BELT | 1 |
| 48 | 740-7825 | WASHER, 8.4MM ID x 16MM OD x 1.6 THK | 4 |
| 49 | 740-7167 | WASHER, LOCK, SPLIT, M6 | 4 |
| 50 | 731-0379 | SCREW, M8 X1.25, 20mm, SHC, HK | 4 |
| 51 | 110-3595 | WASHER, 19.5 ODX 8.5 ID X 2mm, SS | 2 |
| 52 | 110-3549 | LOCKNUT, M8X1.25 | 2 |
| 53 | 740-8565-XX | WELDMENT, FRAME, ION BIKE | 1 |
| 54 | 740-7667 | ASSY, POP PIN | 1 |
| 55 | 740-7643 | SLEEVE, BOTTOM BRACKET, AL | 1 |
| 56 | 731-0373 | WASHER, PLAIN, M6 | 2 |
| 57 | 740-8677 | BLOCK, BRAKE ROD SLEEVE, ION BB | 1 |
| 58 | 740-8163 | COVER, GUSSET, STEPOVER | 1 |
| 59 | 740-7931 | PAD, STRETCH, RUBBER | 1 |
| 60 | 740-8364 | SLEEVE, HBAR, POST | 1 |
| 61 | 740-7941 | SLEEVE, SEAT POST | 1 |
| 62 | 110-3458 | SCREW, M6x1.0, 20mm, FHM, HE, SS | 1 |
| 63 | 110-3507 | SCREW, M6x1.0, 30mm, FHM, HK, SS | 1 |
| 64 | 740-7182 | SCREW, M5X0.8X10, BHC, HE, SS | 2 |
| 65 | 740-7951 | RETAINING RING, EXTERNAL, Ø56mm | 1 |
| 66 | 740-8358 | BADGE, LATCH, ION, SPINNER | 1 |
| 67 | 740-8489-KT | KIT, ASM, BRAKE, ADAPTER, BLADE | 1 |
| 68 | 740-7995 | ASSY, BRAKE, ADJUSTMENT KNOB | 1 |
| 69 | 740-8525 | BAR, FRAME STIFFENER, ION BB | 1 |
| 70 | 740-8661 | ASSY, PLATE, IDLER, ION BELT | 1 |
| 71 | 140-3558 | BEARING, CLUTCH, 16mm | 1 |
| 72 | 740-8539 | ASSY, ROLLER, IDLER, NXT BELT' | 1 |
| 73 | 110-3556 | SCREW, M6X16, HSCHS, SS | 1 |
| 74 | 740-8541 | DIE SPRING GUIDE ROD, BELT SPINNER | 1 |
| 75 | 110-3557 | M5X16, BHSC, SS | 1 |
| 76 | 140-3557 | SPRING, 103N/mm, +/-5, 18 OD, 9 ID, 70mm LONG | 1 |
| 77 | 740-7825 | WASHER, 8.4MM ID x 16MM OD x 1.6 THK | 2 |
| 78 | 110-3548 | HALFNUT, M8X1.25 | 2 |
| 79 | 110-3550 | SPACER, BRASS GUIDE, SPINNER BELT | 1 |
| 80 | 140-3248 | SPACER, BRASS, IDLER GUIDE | 2 |
| 81 | 110-3552 | SCREW, M5X0.7X20, HCSH, SS | 1 |
| 82 | 740-8562 | WASHER, BRASS, CLUTCH BEARING, NXT BELT | 2 |
| 83 | 740-8540 | D SHAFT, CLUTCH BEARING, NXT BELT | 1 |
| 84 | 110-3551 | LOCKNUT, M5X0.7 | 1 |
| 85 | 110-3592 | NUT, NYLOCK, M12 X 1.5 | 1 |
| 86 | 740-8597 | ENDCAP, AXLE, SPINNER FLYWHEEL | 1 |



CORE HEALTH & FITNESS, LLC
4400 NE 77th Ave., Suite 300
Vancouver, WA 98662

| | |
|-----------------------|------------------------------|
| CORE PART NO | REV |
| 740-8567-XX | A |
| TITLE | |
| ASSY, BLADE BELT BIKE | |
| SCALE: 1:20 | SHEET 2 OF 7 SHEET SIZE: B |

9 8 7 6 5 4 3 2 1

NOTES:

1. FOLLOW MFG SPEC ON PROPER INSTALLATION OF RIVET FASTER
2. CLEAN AREAS WITH DENATURED ALCOHOL PRIOR TO ADHERING LOGOS AND LABELS
3. TORQUE TO 15 N-m
4. APPLY LOCTITE 242/243 MED STRENGTH THREAD LOCKER
5. APPLY LOCTITE 609, FOLLOW PROPER APPLICATION DIRECTIONS
6. DO NOT APPLY LOCTITE
7. TORQUE TO 45-50 N-m
8. TORQUE TO 65-67.8 N-m
9. TENSION BELT TO 110 Hz +/- 5 Hz
10. COLOR DESIGNATOR PER -XX AS SPECIFIED IN SOP 620-8222

23
1

SEE SHEET 4

26
1

SEE SHEET 6

25
1

SEE SHEET 5

SEE SHEET 7

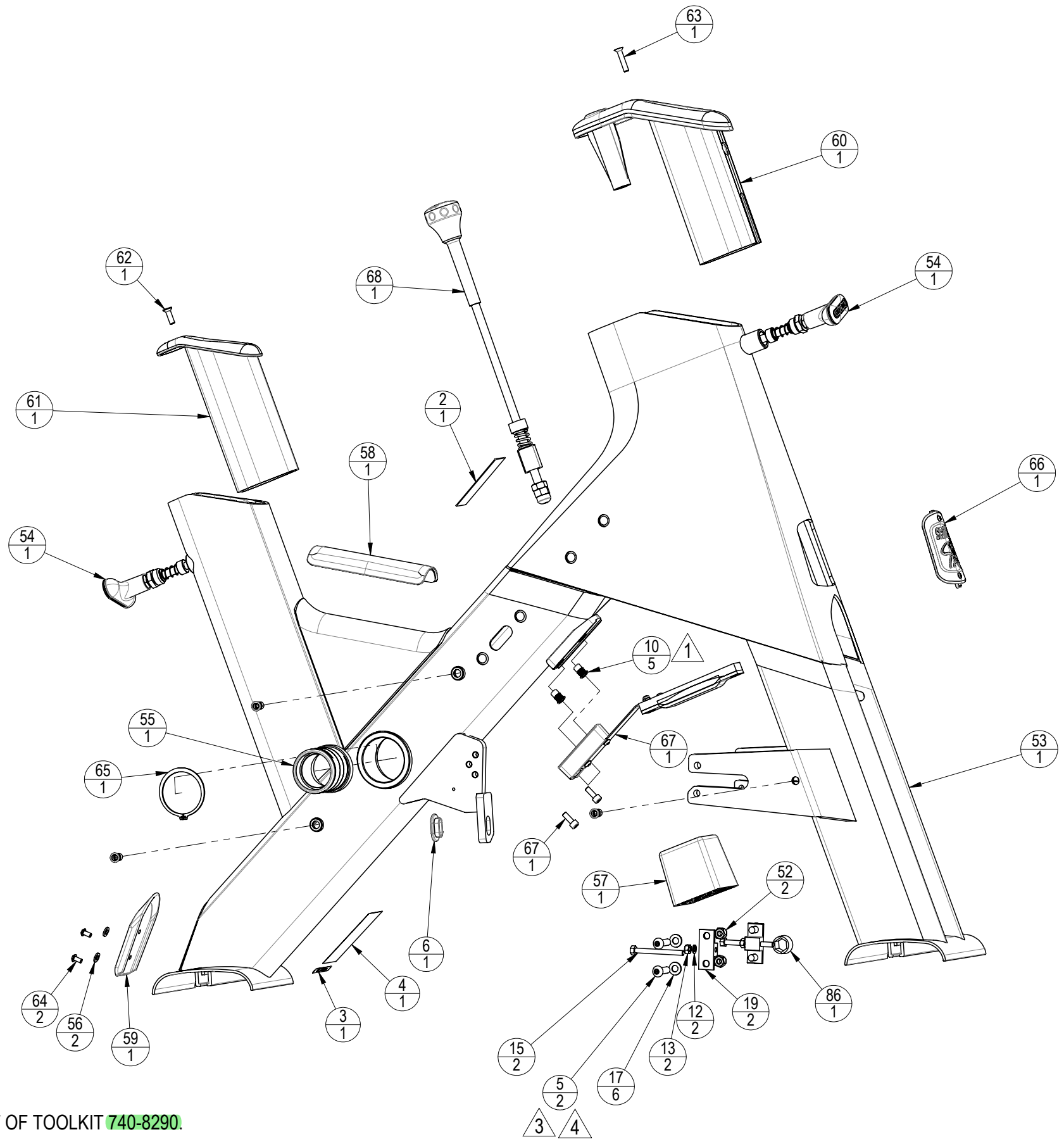
CORE HEALTH & FITNESS, LLC
4400 NE 77th Ave., Suite 300
Vancouver, WA 98662

| | | | |
|--------------------------------|--------------------|---------------|----------|
| CORE PART NO | 740-8567-XX | REV | A |
| TITLE ASSY, BLADE BELT BIKE | | | |
| SCALE: 1:8 | SHEET 3 OF 7 | SHEET SIZE: B | |

9 8 7 6 5 4 3 2 1

J
I
H
G
F
E
D
C
B
A

J
I
H
G
F
E
D
C
B
A

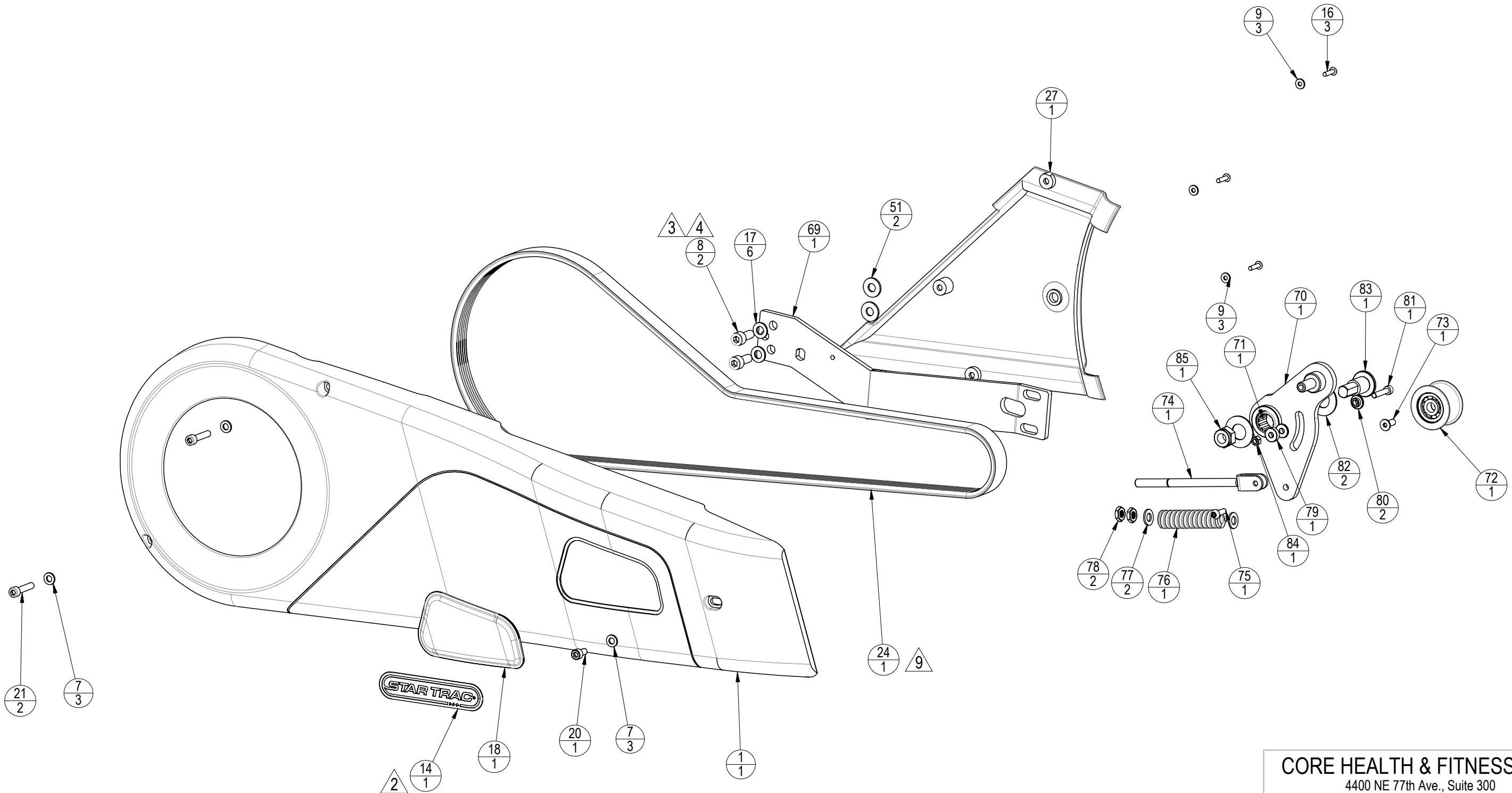


NOTES:

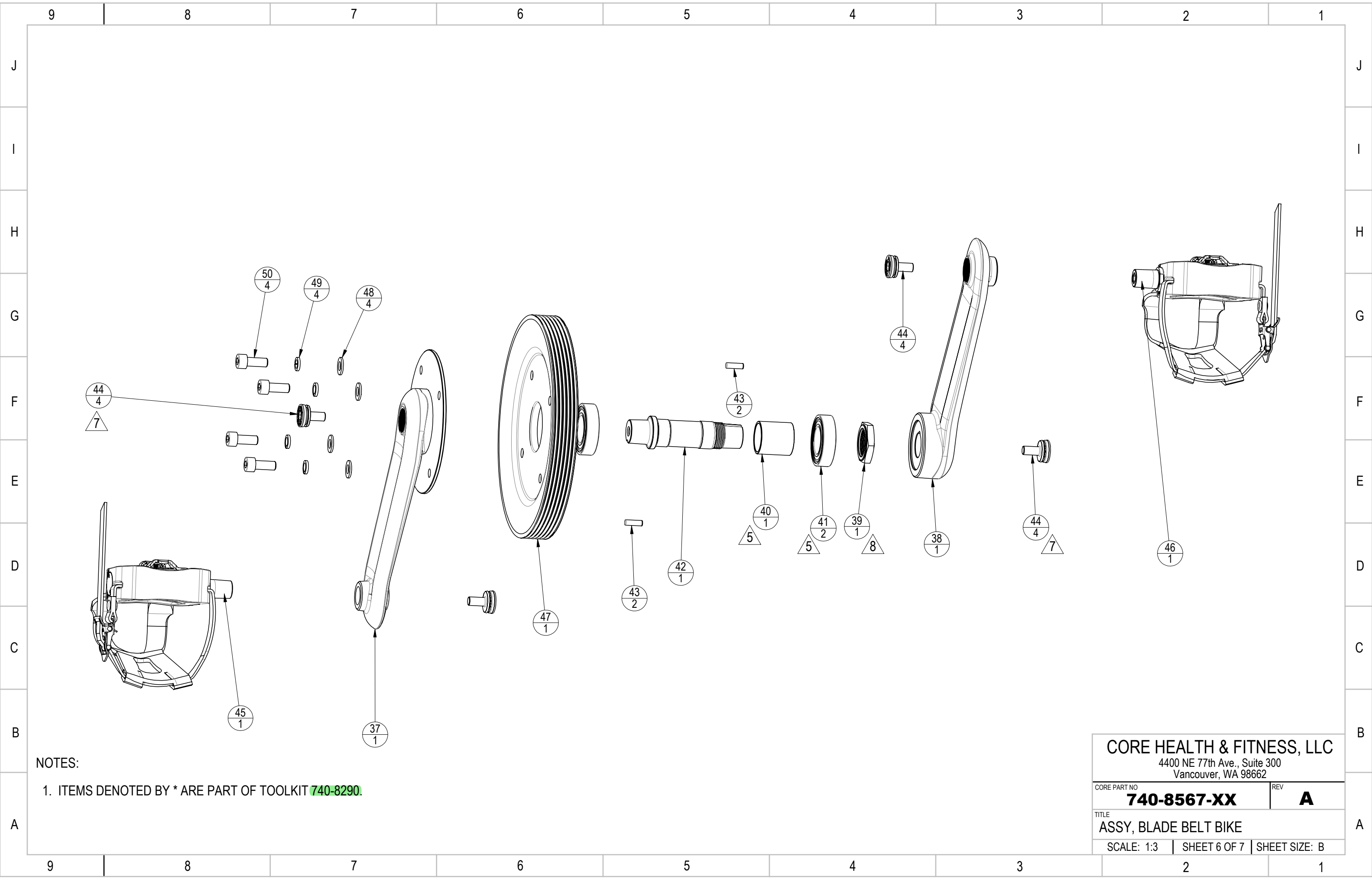
1. ITEMS DENOTED BY * ARE PART OF TOOLKIT **740-8290**.

| | | |
|----------------------------------------------------------------------------------------------|--------------------|---------------|
| CORE HEALTH & FITNESS, LLC 4400 NE 77th Ave., Suite 300 Vancouver, WA 98662 | | |
| CORE PART NO | 740-8567-XX | REV A |
| TITLE ASSY, BLADE BELT BIKE | | |
| SCALE: 1:6 | SHEET 4 OF 7 | SHEET SIZE: B |

- NOTES:
1. CLEAN AREAS WITH DENATURED ALCOHOL PRIOR TO ADHERING LOGOS AND LABELS
 2. TORQUE TO 15 N-m
 3. APPLY LOCTITE 242 OR 243, MED STRENGTH BLUE THREAD LOCKER
 4. TENSION BELT TO 180 LBS



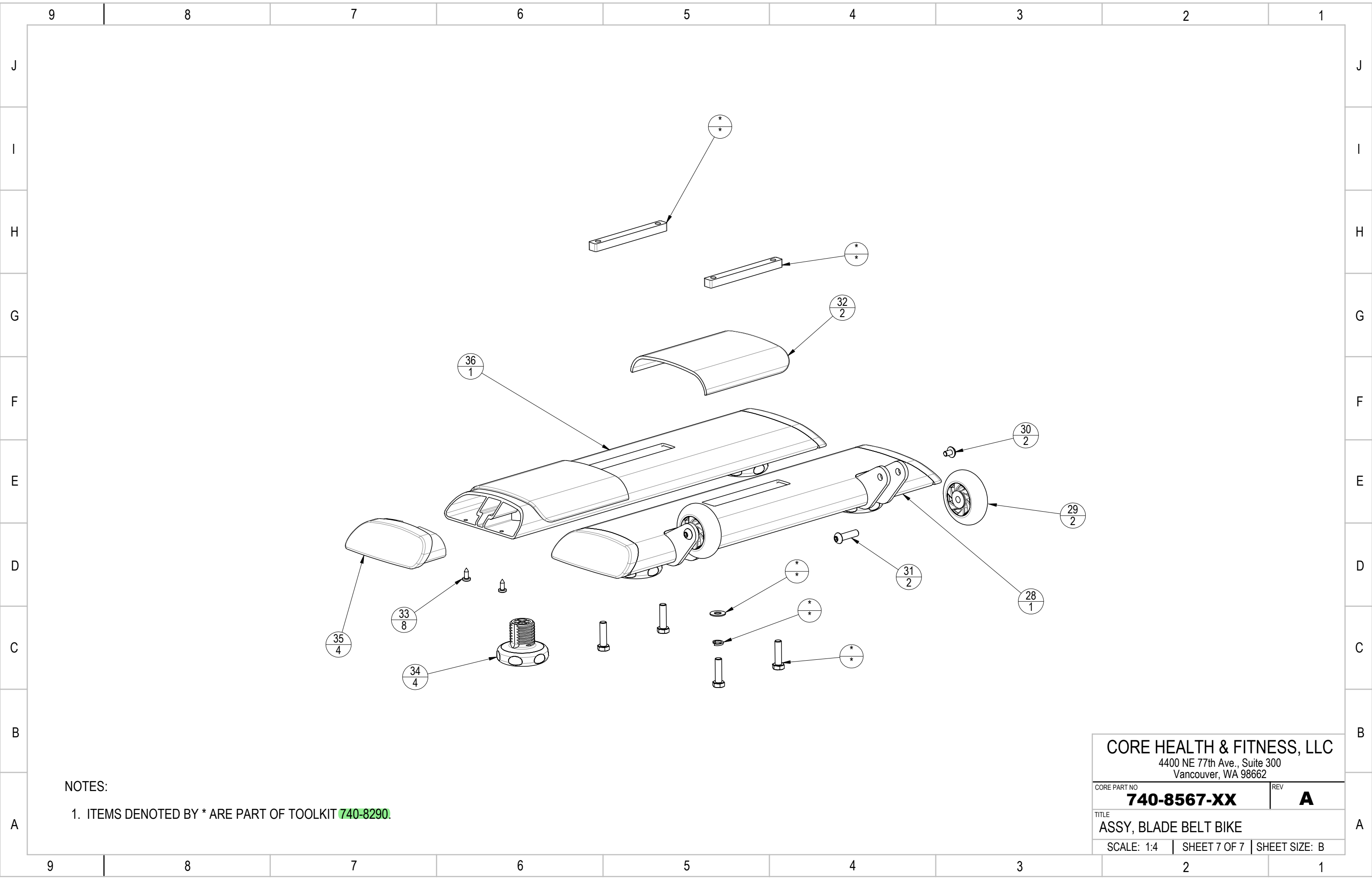
| | | |
|----------------------------------------------------------------------------------------------|--------------------|---------------|
| CORE HEALTH & FITNESS, LLC 4400 NE 77th Ave., Suite 300 Vancouver, WA 98662 | | |
| CORE PART NO | 740-8567-XX | REV A |
| TITLE ASSY, BLADE BELT BIKE | | |
| SCALE: 1:4 | SHEET 5 OF 7 | SHEET SIZE: B |



NOTES:

1. ITEMS DENOTED BY * ARE PART OF TOOLKIT [740-8290](#).

| | | |
|----------------------------------------------------------------------------------------------|-----------------|---------------|
| CORE HEALTH & FITNESS, LLC 4400 NE 77th Ave., Suite 300 Vancouver, WA 98662 | | |
| CORE PART NO 740-8567-XX | REV A | |
| TITLE ASSY, BLADE BELT BIKE | | |
| SCALE: 1:3 | SHEET 6 OF 7 | SHEET SIZE: B |



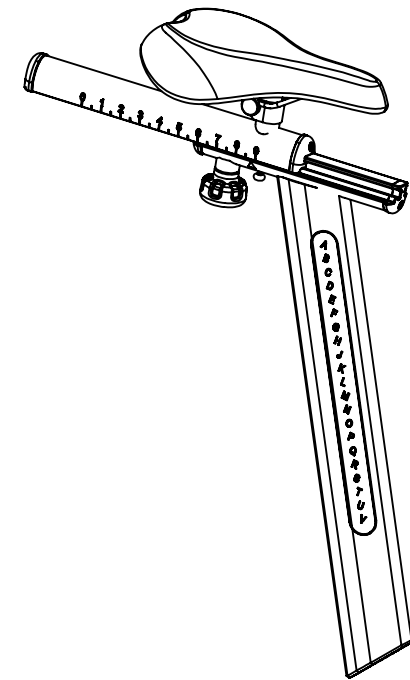
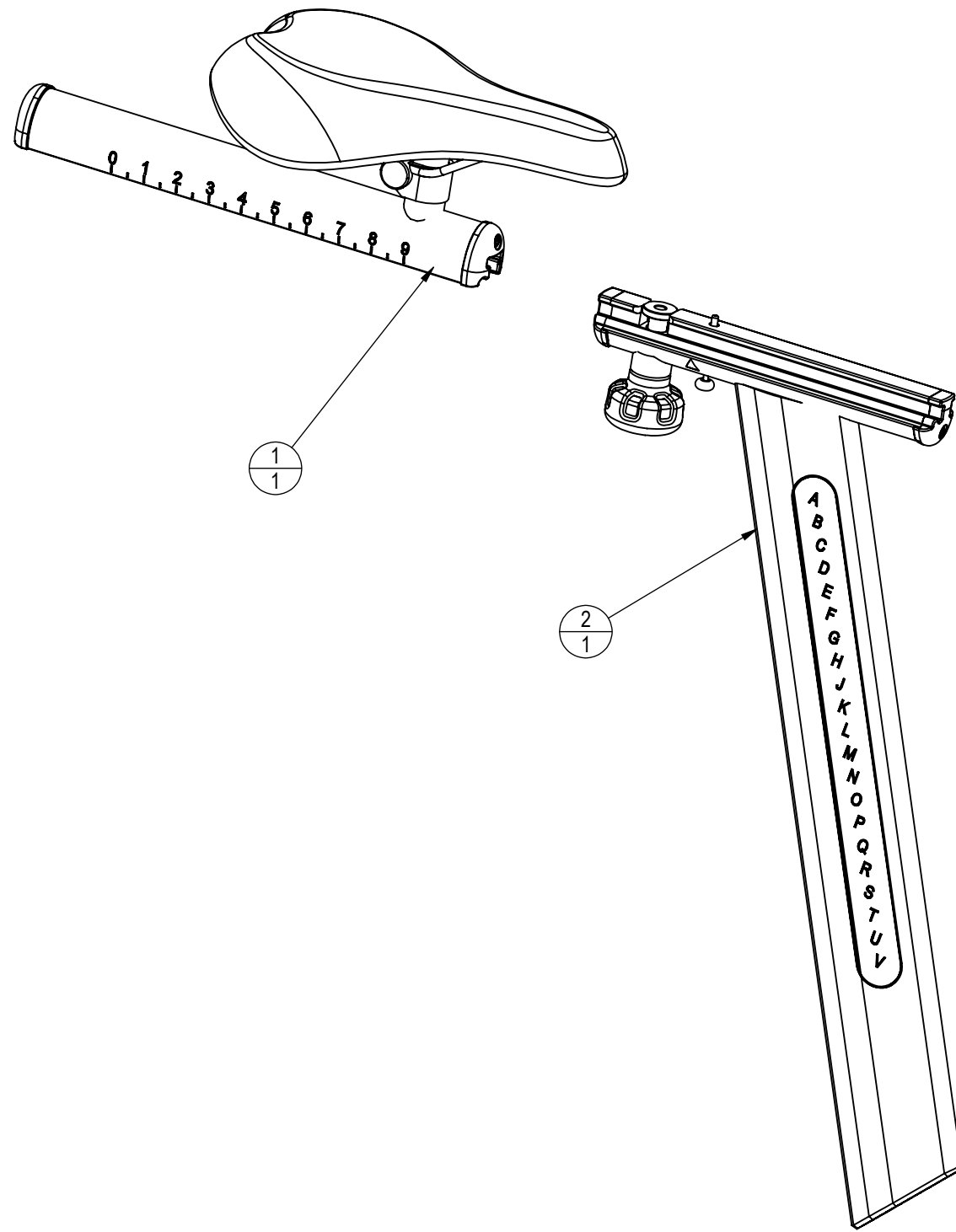
NOTES:

- 1. ITEMS DENOTED BY * ARE PART OF TOOLKIT 740-8290.

| | | |
|----------------------------------------------------------------------------------------------|--------------------|---------------|
| CORE HEALTH & FITNESS, LLC 4400 NE 77th Ave., Suite 300 Vancouver, WA 98662 | | |
| CORE PART NO | 740-8567-XX | REV A |
| TITLE ASSY, BLADE BELT BIKE | | |
| SCALE: 1:4 | SHEET 7 OF 7 | SHEET SIZE: B |

NOTES:

| REVISION HISTORY | | | | |
|------------------|-----------|--------------------|-------|-----|
| REV | DATE | DESCRIPTION | ECO | BY |
| A | 7/30/2012 | PRODUCTION RELEASE | 13782 | SCN |



DOCUMENT STATUS:

NOTICE OF PROPRIETARY INFORMATION
THIS DOCUMENT SHALL NOT BE REPRODUCED NOR SHALL THE INFORMATION CONTAINED HEREIN BE USED BY OR DISCLOSED TO OTHER EXCEPT AS EXPRESSLY AUTHORIZED BY CORE INDUSTRIES, INC., D.B.A. STAR TRAC.

| CLASS OF WORK | UNLESS OTHERWISE SPECIFIED DIMS ARE IN mm. TOLERANCES FOR MEASURE OF LENGTH ARE: | | | | | | | ANGLES = ±2° |
|---------------|----------------------------------------------------------------------------------|----------|-----------|-------------|--------------|---------------|----------------|--------------|
| | 0.5 to 3 | > 3 to 6 | > 6 to 30 | > 30 to 120 | > 120 to 400 | > 400 to 1000 | > 1000 to 2000 | |
| FINE | ±0.05 | ±0.05 | ±0.1 | ±0.15 | ±0.2 | ±0.3 | ±0.5 | ---- |
| MEDIUM | ±0.1 | ±0.1 | ±0.2 | ±0.3 | ±0.5 | ±0.8 | ±1.2 | ±2 |
| COARSE | ±0.2 | ±0.3 | ±0.5 | ±0.8 | ±1.2 | ±2 | ±3 | ±4 |
| VERY COARSE | ---- | ±0.5 | ±1 | ±1.5 | ±2.5 | ±4 | ±6 | ±8 |

MATERIAL SEE BOM

FINISH N/A

VENDOR: N/A

P/N: N/A

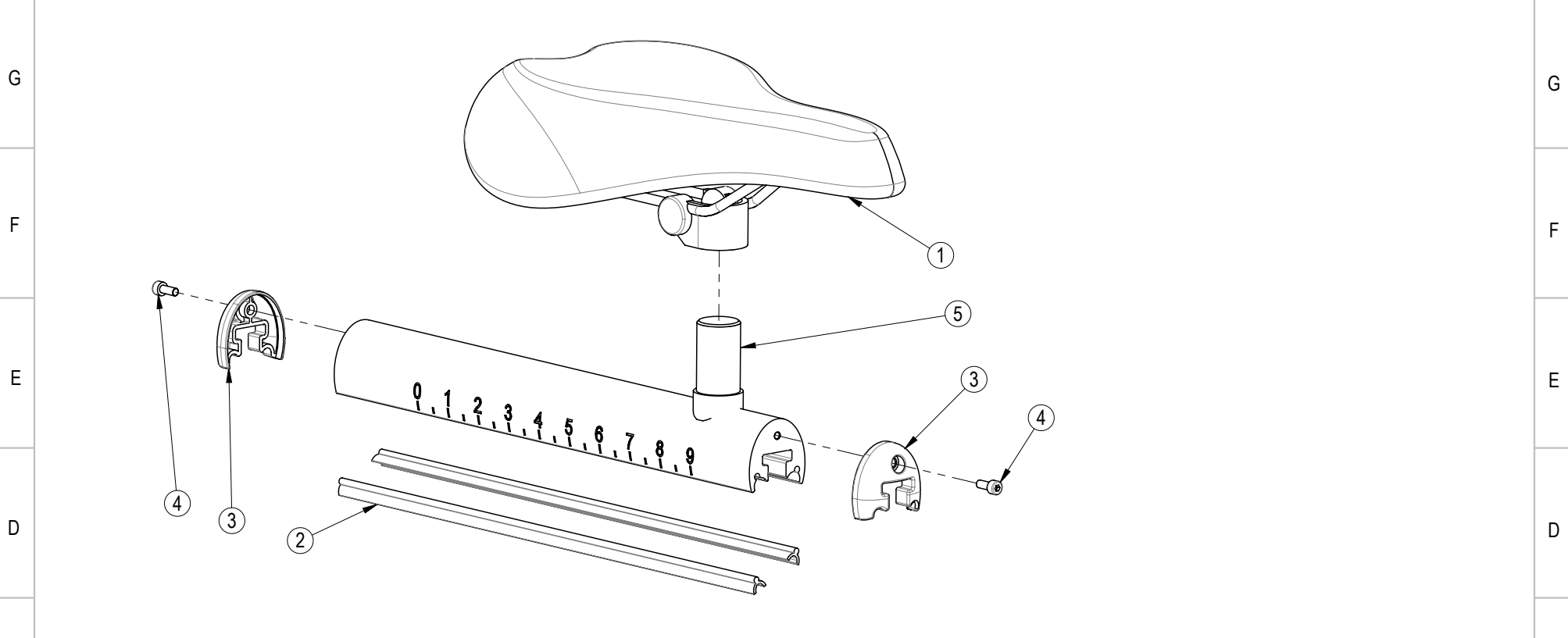
| ITEM NO. | PART NUMBER | DESCRIPTION | QTY. |
|----------|-------------|--------------------------------|------|
| 1 | 740-8271 | ASSY, SEAT, W/ SLIDER | 1 |
| 2 | 740-8285 | ASSY, SEAT POST W/ CAPS, BLADE | 1 |

| THIRD ANGLE PROJECTION | | |
|------------------------|----------------|-------------------|
| DRAWN | INITIAL SCN | DATE 7/13/2012 |
| CHECKED | | |
| APPROVED | | |

| | | |
|---------------------------------------------|-----------------|--------------------------------------|
| CORE INDUSTRIES, INC. DBA | | 14410 Myford Road Irvine CA 92606 |
| STAR TRAC | | |
| STARTRAC PART NO | 740-8374 | REV A |
| TITLE ASSY, SEAT POST, BLADE, ION | | |
| SCALE: 1:4 | SHEET 1 OF 1 | SHEET SIZE: B |

H NOTES:

| REVISION HISTORY | | | | |
|------------------|----------|--------------------|-------|-----|
| REV | DATE | DESCRIPTION | ECO | BY |
| A | 2/2/2012 | PRODUCTION RELEASE | 13652 | DMM |



| CLASS OF WORK | FINE | MEDIUM | COARSE | VERY COARSE |
|---------------|------|--------|--------|-------------|
| | | | X | |

| UNLESS OTHERWISE SPECIFIED DIMS ARE IN mm. TOLERANCES FOR MEASURE OF LENGTH ARE: ANGLES ±2° | 0.5 to 3 | ±0.05 | ±0.1 | ±0.2 | ---- |
|---------------------------------------------------------------------------------------------------|----------------|-------|------|------|------|
| | > 3 to 6 | ±0.05 | ±0.1 | ±0.3 | ±0.5 |
| | > 6 to 30 | ±0.1 | ±0.2 | ±0.5 | ±1 |
| | > 30 to 120 | ±0.15 | ±0.3 | ±0.8 | ±1.5 |
| | > 120 to 400 | ±0.2 | ±0.5 | ±1.2 | ±2.5 |
| | > 400 to 1000 | ±0.3 | ±0.8 | ±2 | ±4 |
| | > 1000 to 2000 | ±0.5 | ±1.2 | ±3 | ±6 |
| | > 2000 | ---- | ±2 | ±4 | ±8 |

DOCUMENT STATUS:

NOTICE OF PROPRIETARY INFORMATION
 THIS DOCUMENT SHALL NOT BE REPRODUCED NOR SHALL THE INFORMATION CONTAINED HEREIN BE USED BY OR DISCLOSED TO OTHER EXCEPT AS EXPRESSLY AUTHORIZED BY CORE INDUSTRIES INC. D.B.A. STAR TRAC.

MATERIAL
SEE BOM

FINISH
N/A

VENDOR: N/A P/N: N/A

| ITEM NO. | PART NUMBER | DESCRIPTION | QTY. |
|----------|-------------|------------------------------------|------|
| 1 | 740-8077 | SADDLE, SILVER, NXT | 1 |
| 2 | 740-8257 | SLIDER INSERT, 225mm L | 2 |
| 3 | 740-8259 | END CAP, SLIDER, FEMALE | 2 |
| 4 | 740-8262 | SCREW, M4 X .7, 10mm, SHCS, HK, SS | 2 |
| 5 | 740-8272 | WELDMENT, TOP SLIDER, SEAT | 1 |

THIRD ANGLE PROJECTION

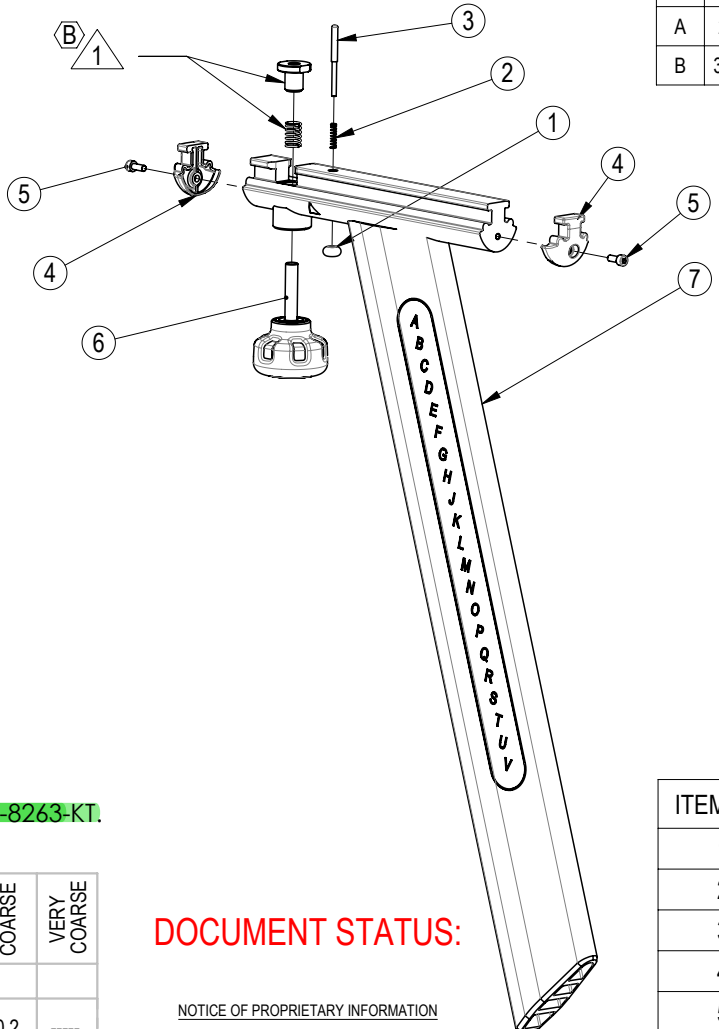
CORE INDUSTRIES INC., DBA
STAR TRAC
 14410 Myford Road
 Irvine CA 92606

STAR TRAC PART NO **740-8271** REV **A**

TITLE
ASSY, SEAT, W/ SLIDER

SCALE: 1:3 | SHEET 1 OF 1 | SHEET SIZE: A

| REVISION HISTORY | | | | |
|------------------|-----------|-----------------------------------------|-------|-----|
| REV | DATE | DESCRIPTION | ECO | BY |
| A | 2/2/2012 | PRODUCTION RELEASE | 13652 | DMM |
| B | 3/23/2012 | REPLACED ITEM 740-7666 WITH 740-8263-KT | 13720 | DMM |



NOTES:

B 1. PART OF KIT 740-8263-KT.

DOCUMENT STATUS:

NOTICE OF PROPRIETARY INFORMATION

THIS DOCUMENT SHALL NOT BE REPRODUCED NOR SHALL THE INFORMATION CONTAINED HEREIN BE USED BY OR DISCLOSED TO OTHER EXCEPT AS EXPRESSLY AUTHORIZED BY CORE INDUSTRIES INC. D.B.A. STAR TRAC.

MATERIAL
SEE BOM

FINISH
N/A

VENDOR: N/A


P/N: N/A

| ITEM NO. | PART NUMBER | DESCRIPTION | QTY. |
|----------|-------------|-------------------------------------|------|
| 1 | 740-7270 | KNOB, SEAT SLIDER, STOPPER | 1 |
| 2 | 740-7271 | SPRING, SEAT SLIDER, NXT | 1 |
| 3 | 740-7526 | PIN, STOP, SEAT SLIDER | 1 |
| 4 | 740-8260 | END CAP, SLIDER, MALE | 2 |
| 5 | 740-8262 | SCREW, M4 X .7, 10mm, SHCS, HK, SS | 2 |
| 6 | 740-8263-KT | KIT, SEAT KNOB, F/A ADJUST, SPINNER | 1 |
| 7 | 740-8278 | WELDMENT, SEAT POST, BLADE | 1 |

| CLASS OF WORK | FINE | MEDIUM | COARSE | VERY COARSE | |
|---------------------------------------------------------------------------------------------|----------------|--------|--------|-------------|------|
| | | ±0.05 | ±0.1 | ±0.2 | ---- |
| UNLESS OTHERWISE SPECIFIED DIMS ARE IN mm. TOLERANCES FOR MEASURE OF LENGTH ARE: ANGLES ±2° | 0.5 to 3 | ±0.05 | ±0.1 | ±0.2 | ---- |
| | > 3 to 6 | ±0.05 | ±0.1 | ±0.3 | ±0.5 |
| | > 6 to 30 | ±0.1 | ±0.2 | ±0.5 | ±1 |
| | > 30 to 120 | ±0.15 | ±0.3 | ±0.8 | ±1.5 |
| | > 120 to 400 | ±0.2 | ±0.5 | ±1.2 | ±2.5 |
| | > 400 to 1000 | ±0.3 | ±0.8 | ±2 | ±4 |
| | > 1000 to 2000 | ±0.5 | ±1.2 | ±3 | ±6 |
| | > 2000 | ---- | ±2 | ±4 | ±8 |

THIRD ANGLE PROJECTION



CORE INDUSTRIES INC., DBA

 14410 Myford Road
 Irvine CA 92606

STAR TRAC PART NO **740-8285** REV **B**

TITLE
ASSY, SEAT POST W/ CAPS, BLADE

SCALE: 1:5 | SHEET 1 OF 1 | SHEET SIZE: A

10 9 8 7 6 5 4 3 2 1

H NOTES:

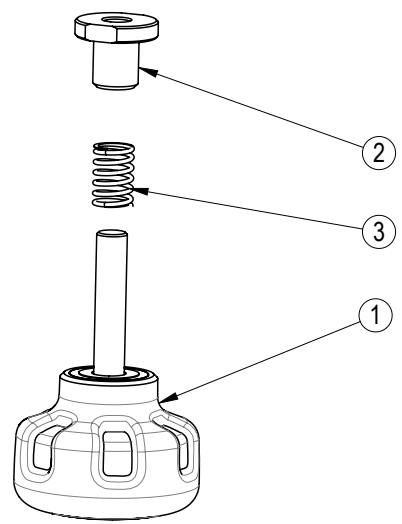
| REVISION HISTORY | | | | |
|------------------|-----------|--------------------|-------|-----|
| REV | DATE | DESCRIPTION | ECO | BY |
| A | 3/23/2012 | PRODUCTION RELEASE | 13720 | DMM |

G

F

E

D



C

B

A

| CLASS OF WORK | FINE | MEDIUM | COARSE | VERY COARSE |
|---------------|------|--------|--------|-------------|
| | | X | | |

| UNLESS OTHERWISE SPECIFIED DIMS ARE IN mm. TOLERANCES FOR MEASURE OF LENGTH ARE: ANGLES ±2° | 0.5 to 3 | ±0.05 | ±0.1 | ±0.2 | ---- |
|---------------------------------------------------------------------------------------------------|----------------|-------|------|------|------|
| | > 3 to 6 | ±0.05 | ±0.1 | ±0.3 | ±0.5 |
| | > 6 to 30 | ±0.1 | ±0.2 | ±0.5 | ±1 |
| | > 30 to 120 | ±0.15 | ±0.3 | ±0.8 | ±1.5 |
| | > 120 to 400 | ±0.2 | ±0.5 | ±1.2 | ±2.5 |
| | > 400 to 1000 | ±0.3 | ±0.8 | ±2 | ±4 |
| | > 1000 to 2000 | ±0.5 | ±1.2 | ±3 | ±6 |
| | > 2000 | ---- | ±2 | ±4 | ±8 |

DOCUMENT STATUS:

NOTICE OF PROPRIETARY INFORMATION
 THIS DOCUMENT SHALL NOT BE REPRODUCED NOR SHALL THE INFORMATION CONTAINED HEREIN BE USED BY OR DISCLOSED TO OTHER EXCEPT AS EXPRESSLY AUTHORIZED BY CORE INDUSTRIES INC, D.B.A. STAR TRAC.

MATERIAL
SEE BOM

FINISH
N/A

VENDOR: N/A P/N: N/A

| ITEM NO. | PART NUMBER | DESCRIPTION | QTY. |
|----------|-------------|-----------------------------------|------|
| 1 | 740-8263 | KNOB, ADJUST, W/ BRASS INSERT | 1 |
| 2 | 740-8329 | HOLDING NUT, SEAT SLIDER, SPINNER | 1 |
| 3 | 740-8330 | SPRING, FORE/AFT ADJUST, SPINNER | 1 |

THIRD ANGLE PROJECTION

| | | |
|----------|----------------|------------------|
| DRAWN | INITIAL DMM | DATE 03/22/12 |
| CHECKED | | |
| APPROVED | | |

CORE INDUSTRIES INC., DBA
 14410 Myford Road
 Irvine CA 92606

STAR TRAC PART NO
740-8263-KT

REV
A

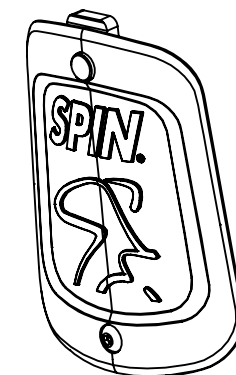
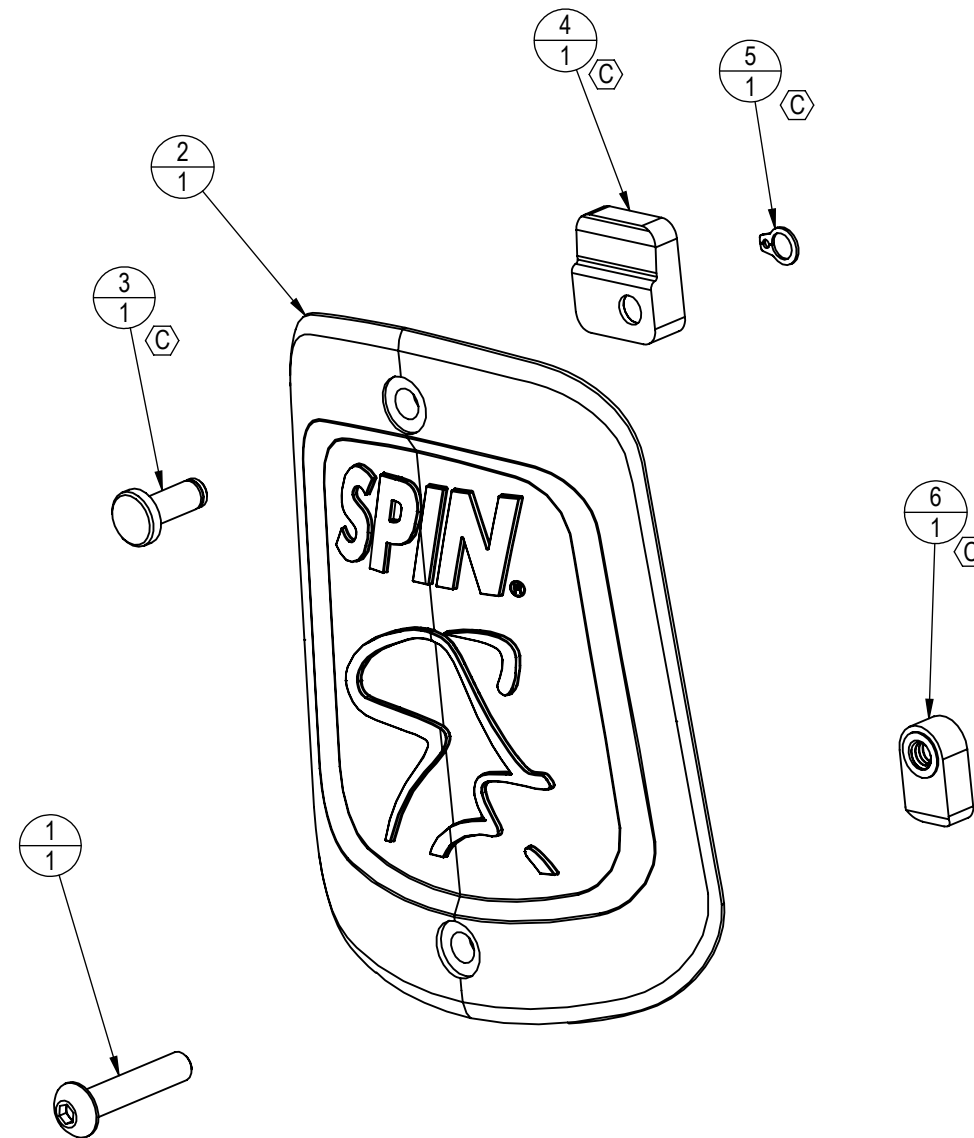
TITLE
KIT, SEAT KNOB, F/A ADJUST, SPINNER

SCALE: 1:2 | SHEET 1 OF 1 | SHEET SIZE: A

10 9 8 7 6 5 4 3 2 1

NOTES:

| REVISION HISTORY | | | | |
|------------------|------------|-------------------------------------------------------------------------------------|-------|-----|
| REV | DATE | DESCRIPTION | ECO | BY |
| A | 7/19/2012 | PRODUCTION RELEASE | 13782 | SCN |
| B | 10/19/2012 | SHEET 2: ADD DETAIL C TO SHOW ADD'L CHG'S, CHG HOLE SIZE WAS $\phi 3$ IS $\phi 2.4$ | 13865 | SCN |
| C | 4/28/2014 | ADD ITEMS 3, 4, 5, 6. | 14310 | OT |



| ITEM NO. | PART NUMBER | DESCRIPTION | QTY. |
|----------|--------------|--------------------------------|------|
| 1 | 740-8005 | SCREW, M4 X 0.7, 20mm, BHS, SS | 1 |
| 2 | 740-8358_001 | BADGE, COVER, ION | 1 |
| 3 | 740-8586 | PIN, HOOK, ION BADGE | 1 |
| 4 | 740-8588 | HOOK ASSM, OVERMOLD, ION BADGE | 1 |
| 5 | 9740-8587 | CLIP, PIN, ION BADGE | 1 |
| 6 | 740-8589 | LATCH ASSEMBLY, IODINE BADGE | 1 |

DOCUMENT STATUS:

NOTICE OF PROPRIETARY INFORMATION
THIS DOCUMENT SHALL NOT BE REPRODUCED NOR SHALL THE INFORMATION CONTAINED HEREIN BE USED BY OR DISCLOSED TO OTHER EXCEPT AS EXPRESSLY AUTHORIZED BY CORE INDUSTRIES, INC., D.B.A. STAR TRAC.

| CLASS OF WORK | UNLESS OTHERWISE SPECIFIED DIMS ARE IN mm. TOLERANCES FOR MEASURE OF LENGTH ARE: | | | | | | | ANGLES = $\pm 2^\circ$ |
|---------------|----------------------------------------------------------------------------------|------------|-----------|-------------|--------------|---------------|----------------|------------------------|
| | 0.5 to 3 | > 3 to 6 | > 6 to 30 | > 30 to 120 | > 120 to 400 | > 400 to 1000 | > 1000 to 2000 | |
| FINE | ± 0.05 | ± 0.05 | ± 0.1 | ± 0.15 | ± 0.2 | ± 0.3 | ± 0.5 | ---- |
| MEDIUM X | ± 0.1 | ± 0.1 | ± 0.2 | ± 0.3 | ± 0.5 | ± 0.8 | ± 1.2 | ± 2 |
| COARSE | ± 0.2 | ± 0.3 | ± 0.5 | ± 0.8 | ± 1.2 | ± 2 | ± 3 | ± 4 |
| VERY COARSE | ---- | ± 0.5 | ± 1 | ± 1.5 | ± 2.5 | ± 4 | ± 6 | ± 8 |

MATERIAL
SEE BOM

FINISH
SEE BOM

VENDOR:

P/N:

THIRD ANGLE PROJECTION

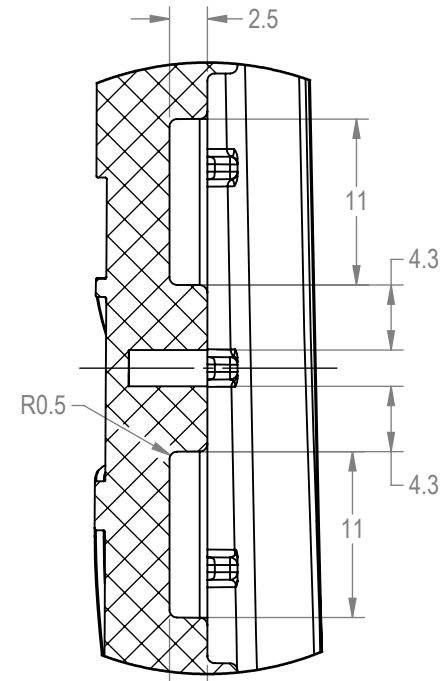


| | | |
|----------|----------------|-------------------|
| DRAWN | INITIAL SCN | DATE 6/21/2012 |
| CHECKED | | |
| APPROVED | | |

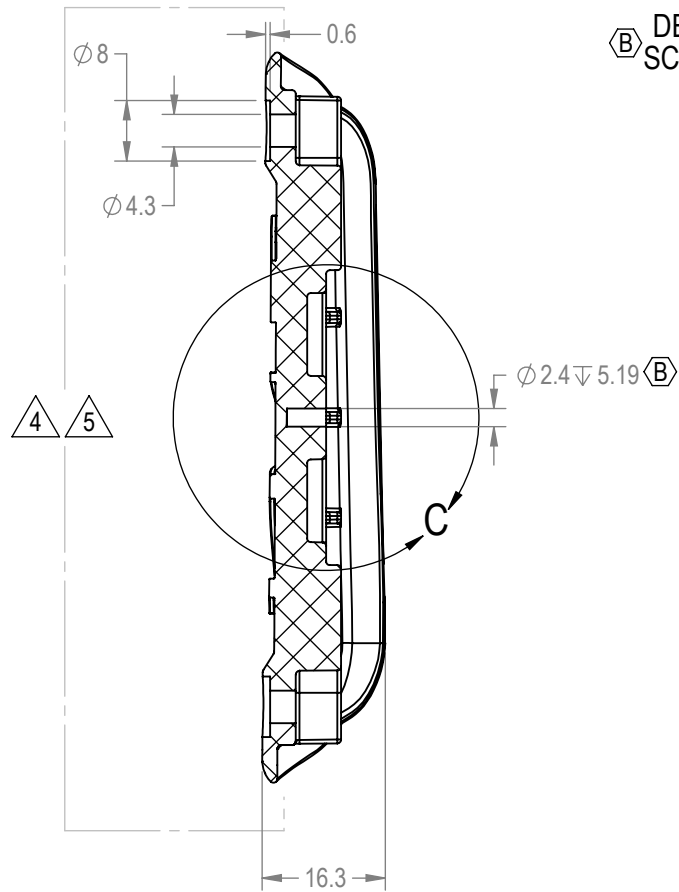
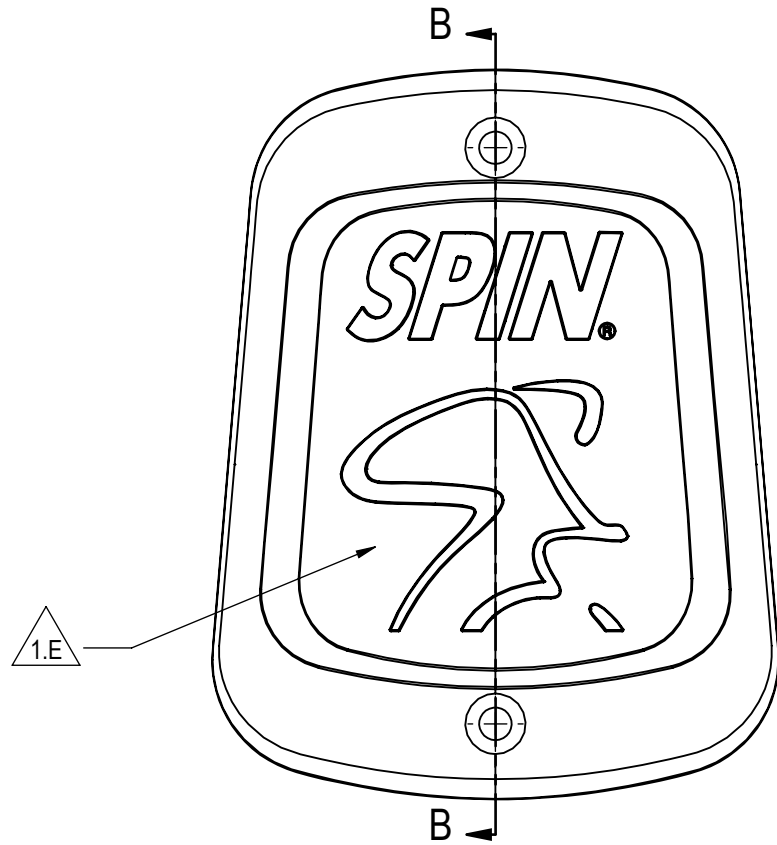
| | | | |
|--------------------------------------------|--------------|--------------------------------------|--|
| CORE INDUSTRIES, INC. DBA | | 14410 Myford Road Irvine CA 92606 | |
| STAR TRAC | | | |
| STARTRAC PART NO | | REV | |
| 740-8358 | | C | |
| TITLE BADGE, LATCH, ION, SPINNER | | | |
| SCALE: 1:1 | SHEET 1 OF 2 | SHEET SIZE: B | |

NOTES:

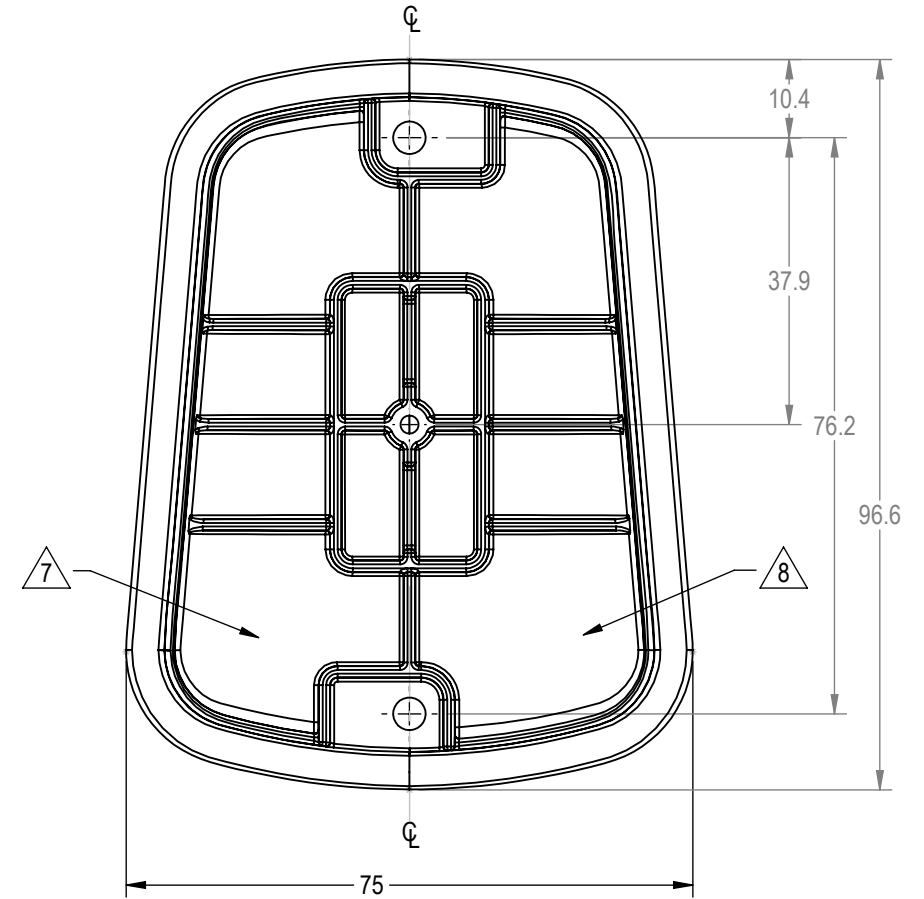
1. PART NUMBER: **740-8358_001**
2. MATERIAL:
 - A. FLAME RETARDANT ABS (OR ENGINEERING APPROVED EQUIVALENT). FLAME RATING UL94V1 OR BETTER
 - B. PART SHALL BE FABRICATED BY INJECTION MOLDING
 - C. COLOR: WHITE
 - D. FINISH: PART TO BE CHROME PLATED
 - E. LOGO: SILK SCREEN BLACK AS NOTED
3. DRAWING IS FOR REFERENCE ONLY. PLEASE REFER TO SOLIDWORKS MODEL 740-9358_001.SLDPRT FOR ACTUAL GEOMETRY AND DIMENSIONS. (SAME REV AS DRAWING)
4. PART TO BE FREE FROM OIL AND MOLD RELEASE RESIDUE
5. NOTED SURFACE TO BE FREE FROM BLEMISHES, GATE AND SINK MARKS, KNIT LINES, AND EJECTOR PIN MARKS
6. EJECTOR PIN MARKS TO BE FLUSH OR UP TO 0.25mm BELOW SURFACE
7. PART NUMBER TO BE ETCHED INTO TOOL AS SHOWN - 14 PT LETTERING (3.6mm TALL)
8. RECYCLING SYMBOL MUST BE MOLDED INTO PLASTIC APPROXIMATELY AS SHOWN, SYMBOL SHOULD BE 12mm TALL, SYMBOL MUST BE CLEAR AND VISIBLE
9. USE TOLERANCE FROM SHEET 1



DETAIL C
SCALE 2:1



SECTION B-B

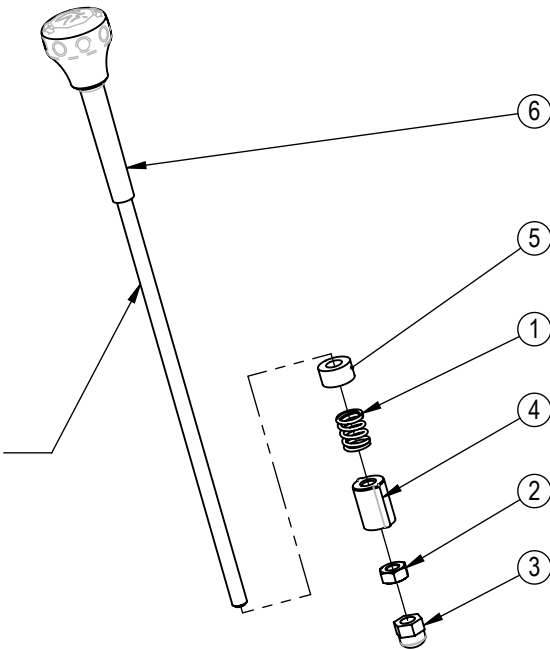


| | | | |
|--------------------------------------------|-----------------|--------------------------------------|----------|
| CORE INDUSTRIES, INC. DBA | | 14410 Myford Road Irvine CA 92606 | |
| | | | |
| STARTRAC PART NO | 740-8358 | REV | C |
| TITLE BADGE, LATCH, ION, SPINNER | | | |
| SCALE: 1:1 | SHEET 2 OF 2 | SHEET SIZE: B | |

NOTES:

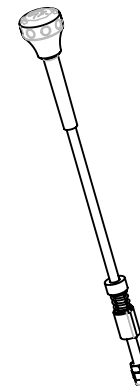
| REVISION HISTORY | | | | |
|------------------|----------|--------------------|-------|-----|
| REV | DATE | DESCRIPTION | ECO | BY |
| A | 3/7/2011 | PRODUCTION RELEASE | 13486 | DMM |

APPLY HIGH QUALITY MOLY-BASED LITHIUM GREASE TO ENTIRE LENGTH OF THREAD



APPLY GREASE TO INSIDE AND OUTSIDE OF ITEM **740-7573**

TORQUE TO 80-85 N-m



| CLASS OF WORK | FINE | MEDIUM | COARSE | VERY COARSE |
|---------------|------|--------|--------|-------------|
| | | | X | |

| UNLESS OTHERWISE SPECIFIED DIMS ARE IN mm. TOLERANCES FOR MEASURE OF LENGTH ARE: ANGLES ±2° | 0.5 to 3 | ±0.05 | ±0.1 | ±0.2 | ---- |
|---------------------------------------------------------------------------------------------|----------------|-------|------|------|------|
| | > 3 to 6 | ±0.05 | ±0.1 | ±0.3 | ±0.5 |
| | > 6 to 30 | ±0.1 | ±0.2 | ±0.5 | ±1 |
| | > 30 to 120 | ±0.15 | ±0.3 | ±0.8 | ±1.5 |
| | > 120 to 400 | ±0.2 | ±0.5 | ±1.2 | ±2.5 |
| | > 400 to 1000 | ±0.3 | ±0.8 | ±2 | ±4 |
| | > 1000 to 2000 | ±0.5 | ±1.2 | ±3 | ±6 |
| | > 2000 | ---- | ±2 | ±4 | ±8 |

DOCUMENT STATUS:

NOTICE OF PROPRIETARY INFORMATION

THIS DOCUMENT SHALL NOT BE REPRODUCED NOR SHALL THE INFORMATION CONTAINED HEREIN BE USED BY OR DISCLOSED TO OTHER EXCEPT AS EXPRESSLY AUTHORIZED BY CORE INDUSTRIES INC, D.B.A. STAR TRAC.

MATERIAL
SEE BOM

FINISH

VENDOR:

P/N:

| ITEM NO. | PART NUMBER | DESCRIPTION | QTY |
|----------|-----------------|----------------------------|-----|
| 1 | 740-7124 | SPRING, BRAKE KNOB | 1 |
| 2 | 740-7178 | NUT, M10X1.5, HE, SS | 1 |
| 3 | 740-7189 | NUT, M10X1.5, ACORN, SS | 1 |
| 4 | 740-7573 | BUSHING, THREADED, BRAKE | 1 |
| 5 | 740-7598 | CUSHION, BRAKE ASSY | 1 |
| 6 | 740-7669 | ASSY, KNOB, BRAKE, SPINNER | 1 |

THIRD ANGLE PROJECTION



CORE IND INC., DBA



14410 Myford Road
Irvine CA 92606

STAR TRAC PART NO

740-7995

REV

A

TITLE

ASSY, BRAKE, ADJUSTMENT KNOB

SCALE: 1:5

SHEET 1 OF 1

SHEET SIZE: A